



# RS48-11 GOLF ROLLER MANUAL



56 Export Drive, Ernest Junction, Qld. 4214 Ph .+ 61 7 5594 7199  
www.truturf.com email: sales@truturf.com Fax + 61 7 5571 5493



# CONTENTS

1. **Important Information**
2. **Machine Information**
3. **Safety Information**
4. **Warranty**
5. **Initial Assembly**
  - List of Components*
  - Mounting The Seat To The Seat Frame*
  - Mounting The Steering Arm To The Machine*
  - Attaching The Trailer Arms To The Machine Body*
  - Attaching The Drawbar To The Trailer Arms*
  - Attaching The Wheels To The Trailer Arms*
  - Attaching The Dampener Strut*
  - Filling The Engine With Oil*
  - Lubricating The Smoothing Roller Pivot Bearings*
  - Breather Cap Replacement*
  
9. **Operation**
  - Pre-operation checks*
  - Standard Operation Procedures*
  - Points To Remember*
  - Spiker*
  
12. **Maintenance**
  - Maintenance Schedule*
  - Storing*
  - Service Of Drive System*
  - Lubrication*
  - Service Of Bearings*
  - Changing Of Oil*
  - Maintenance Schedule*
  
15. **Fault Finding**
  - Roller Will Not Move Either Way*
  - Roller Will Not Steer*
  - Roller Has Excessive Vibration*
  - Smoothing Rollers Seized*
  - Rubber Drive Roller Will Not Rotate*
  
- 16 **Machine Components**
- 34 **Labels**
- 35 **Part List**

***Separate Engine Owners Manual Included***



# IMPORTANT

## PLEASE READ AND UNDERSTAND BEFORE OPERATING MACHINE

1. Pre-check all nuts, bolts, grub screws for tightness prior to operating machine.
2. Understand the operating procedures and the controls before operating.
3. Use the machine to roll **18-36 greens** then **check** that all nuts, bolts etc. are tight.
4. **Loose transmission and drive roller sprockets will cause damage to shafts & keyways. Ensure they are correctly tightened at all times.**
5. **Change the transmission oil after 50 hours of operation, then as per the servicing schedule.**

As a guide to correct transmission oil use, Mobil I 5W-50W Synthetic Oil or an alternate in the U.S.A. use Lubemaster Synthetic, SAE 50 Transmission Lube, Phone. 1800 527 9929 or in Australia only use – Penrite Synthetic 5 SAE 5W-60. Phone +61 7 5594 7199. Or suitably equivalent oils from these manufacturers BP, Caltex, Castrol, Chevron, Esso, Exxon, Texaco.



Congratulations on your investment in the RS48-11 Roll 'n' Spike Golf Green Roller and your move to smoother, faster, more consistent putting Greens. The following operation and maintenance manual has been prepared for use with the RS48-11 Roll 'n' Spike Golf Green Roller. It is intended as a guide and supplemental updates to the manual may take place at a future date, without prior notice.

This machine is engineered to be simple to operate and easy to maintain. If you have any questions or concerns that this manual does not address, please feel free to contact your distributor at:

NAME: \_\_\_\_\_  
ADDRESS: \_\_\_\_\_  
\_\_\_\_\_  
TELEPHONE: \_\_\_\_\_  
FACSIMILE: \_\_\_\_\_

<p style="text-align: center;"><b>MACHINE INFORMATION</b></p> <p style="text-align: center;"><b>RS48-11 Roll 'n' Spike Golf Green Roller</b></p> <p>Serial No. _____</p> <p>Engine No. _____</p> <p>Transmission No. _____</p> <p>Purchase Date No. _____</p>
---



## SAFETY INFORMATION

**Safety is of the utmost importance when operating turf equipment. To ensure safe operation of the RS48-11 Roll 'n' Spike Roller, please follow the following safety guidelines.**

- \* Always make a pre-operation inspection before you start the engine. If this procedure is not carried out damage to property or personnel may occur.
- \* Keep children, pets and inexperienced personnel away from the machine. This machine should only be operated by trained and skilled personnel - check with your supervisor if you are unsure.
- \* Know how to stop the engine when in motion. Read and understand engine manufacturers manual, as supplied.
- \* Never permit inexperienced operators to use the machine. This machine requires certain knowledge and expertise to operate it; you must be a trained person to use this machine. Unskilled persons can harm themselves and others if they operate this machine.
- \* Do not use in enclosed areas unless well ventilated. Carbon monoxide gases are dangerous if inhaled, it can cause death; use the machine outdoors.
- \* When transporting the roller, make sure the trailer lock down mechanism is secure to prevent premature release. If the trailer lock is not correctly engaged while towing and releases accidentally, the front of the roller can drop and dig into the ground, causing the machine to move dangerously in any direction causing bodily injury. This also applies during normal maintenance procedures - make sure the latch is locked in place. When carrying out maintenance ensure the latch is engaged correctly; if it is not the trailer arm could fly up making contact with a person(s) causing serious injury.
- \* When engine is running, always keep hands and loose clothing away from rotating chains and sprockets in the transmission area. If hair, clothing or loose objects become entangled on a rotating shaft serious bodily injury could occur. Stop engine before opening safety cover fitted to the transmission area.

**OPERATOR, REMEMBER IT IS YOUR RESPONSIBILITY TO BE AWARE OF YOUR SURROUNDINGS.  
TO AVOID ACCIDENTS, THINK SAFE AND OPERATE SAFE.**



## ONE YEAR WARRANTY

**Universal Conditions:** Tru-Turf Equipment will either repair or replace any item or part of a Tru-Turf Equipment turf maintenance product that is defective in workmanship or material for a period of twelve (12) months from the date of delivery of the new product to the original end user. These items will be repaired or replaced free of charge and freight free.

**Products Protected By This Warranty:** This Warranty relates to the following products manufactured by Tru-Turf Equipment and parts used to make these products:- GR39 Golf Greens Roller; GR48 Golf Greens Roller; GR7000 Golf Greens Roller; GR11000 Golf Greens Roller; RS48 Roll 'n' Spike Golf Greens Roller; RS48-11 Roll 'n' Spike Golf Greens Roller; RS48-11B Roll "n" Spike Golf Greens Roller; Triplex Roll 'n' Spike Mower Attachment Heads and Brackets; MT2000-S Single Tote for Walk Behind Mowers; MT2000-D Dual Tote for Walk Behind Mowers; Sports Ground Roll 'n' Spike Turf Roller.

**Parts Warranted By Suppliers To Tru-Turf:** Specific component parts supplied to Tru-Turf Equipment are covered by that supplier's Warranty. These parts include Eaton Transmission, Honda Engines and Kohler Engines.

**Normal Wear and Tear:** Tru-Turf Equipment will not repair or replace parts subject to normal maintenance routines as specified in the products Operator's Manual nor to parts subject to wear and tear during the correct operation of the product. These parts include, but are not limited to, oils, filters, tires, shafts, bearings, blades, spikers, slicers, brakes, belts, hoses and spark plugs.

**Other Items Not Covered By This Warranty:** Tru-Turf Equipment will not repair or replace free-of-charge any item that has been damaged by accident, lack of reasonable care and protection or lack of suitable storage. We will not cover parts that have been altered or modified by anyone other than Tru-Turf Equipment nor will we cover used parts that are installed in place of failed parts. We will not cover parts that have not been installed correctly by the end user or its agents nor will we cover parts that have not been maintained as per the Operator's Manual. Service calls and overtime labour rates will not be covered. We will not cover freight costs related to the return of the faulty product to Tru-Turf Equipment or its agents. Tru-Turf Equipment will not be liable for any consequential loss or damage or costs caused by or incidental to the failure of any new part supplied with the original purchase or any new part supplied as a replacement for any failed part.

**Lodging Warranty Claims:** The final purchaser of the new Tru-Turf Equipment product must lodge a Warranty Claim with Tru-Turf Equipment or its agents. The final purchaser must provide written evidence detailing the product's delivery date to that purchaser and the reasons why the purchaser believes that the product or its part is defective in the categories of faulty material or workmanship. The purchaser is to deliver the faulty product or part to Tru-Turf Equipment or its agents at the purchaser's expense. Acceptance or rejection of the Warranty Claim is entirely at the discretion of Tru-Turf Equipment or their Suppliers who warrant their own part/s.

No person or organization has the authority to modify the terms or conditions or limitations of this Warranty without the written consent of Tru-Turf Equipment



## INITIAL ASSEMBLY

When you receive the crate, the machine will be broken down into components ready for assembly. If you run into any problems during assembly, please feel free to call your local distributor or agent.

### List of Components

QTY	Description	QTY	Description
1	Operation, Maintenance & Parts Manual	2	Tyres mounted on Wheel Rims
1	Machine Frame/Body	2	1" x 1 3/4" Flat Washers
1	Drivers Seat	4	25mm External Circlips
1	Seat Pin	1	Left-side Trailer Arm
2	12mm External Circlip	1	Right-side Trailer Arm
1	Steering Joystick	1	Drawbar Coupling Assembly
1	Woodruff Key	2	2.1/4" x 3/8" UNF Hex Head bolt
1	Dampener Strut	2	3/8" UNF Nyloc Nuts



### Step 1: MOUNTING THE SEAT TO THE SEAT FRAME

- \* Remove the circlip and the 12mm diameter pin from the seat frame.
- \* Place the seat, with the seat back oriented toward the rear of the machine (the front of the machine is the side where the pedals are located).
- \* Replace 12mm diameter seat locating pin through seat frame guides and through the seat guide, replace external circlip on the end of 12mm diameter rod to prevent the seat pin sliding out.

### Step 2: MOUNT THE STEERING ARM TO THE MACHINE

- \* Select the steering joystick.
- \* Place the keyed end of the steering joystick into the hole on top of the steering support cylinder ( the cylinder is located directly behind the foot pedal and is approximately 12" high. There is a sealed bearing laying flat in the top and bottom of the cylinder.
- \* Slide the steering joystick into the hole until it rests against the shoulder. If the steering joystick stops before reaching the shoulder, use emery cloth to polish the shaft. You may also use a light oil on the bearing and shaft to allow the shaft to slide freely.
- \* Lift up the smoothing roller side of the machine so that you can get to the underside of the machine. On the opposite side of the machine from the smoothing rollers, there is a trailer pivot pin ( 25mm in diameter ) welded on the top of the body which will prevent the machine from rolling on its side.

**Very Important:** Brace the machine so that it will not fall over. Secure the machine with a rope or blocks to prevent the machine from falling.

- \* Locate the joystick shaft on the underside of the machine (Again, this is toward the front of the machine).
- \* Locate the Woodruff Key. The Woodruff Key is a 3/4" x 3/16" thick piece of steel in the shape of a half circle.
- \* Place the round-side of the Woodruff Key into the rectangular key slot on the joystick shaft. Hammer or squeeze with pliers into place. When complete, the flat side of the Woodruff Key should be parallel to the steering rod.





- \* Place the steering linkage assembly onto the steering shaft. The “shiny” arm or rod end should be on the ground-side or lower side of the steering arm assembly.
- \* Line up the “square groove” on the steering arm assembly with the Woodruff Key with your hand, slide or knock the assembly onto the joystick toward the bearing as far as it will go and tighten the 5/16 Grub screw up against the joystick shaft. Make sure that the steering linkage remains aligned with the Woodruff Key and the Woodruff Key remains parallel to the rod when sliding the steering linkage on the rod.

**Important:** Do not reduce the thickness of the Woodruff Key. It is designed to be a no tolerance fit.

### **Step 3: ATTACHING THE RIGHT HAND TRAILER ARM TO MACHINE BODY**

- \* Locate the trailer arm support axle (1” in diameter) which extends out on the side of the machine, remove the circlip from the axle. Slide right side trailer arm, onto the axle, replace the circlip, ensuring it is located in the groove correctly. Grease both trailer arm support axles.

### **Step 4: ATTACHING DAMPENER STRUT & LEFT HAND TRAILER ARM**

- \* Locate the trailer arm support axle (1” in diameter) which extends out on the side of the machine, remove the circlip from the axle. Hold the trailer arm in the vertical position and slide it part way onto the axle, ensuring the trailer arm will rotate past the trailer arm stop. Locate dampener strut., remove packing from the unattached end. Apply Threadlocker “Loctite” to the M10 bolt attached to the dampener strut. Screw M10 bolt into the strut support on the trailer arm. Rotate the trailer arm forward until it clears the trailer arm stop, use a soft headed hammer and tap the trailer arm on the axle until the circlip groove is revealed, replace the circlip, ensuring it is located in the groove correctly.

### **Step 5: ATTACHING DRAWBAR TO TRAILER ARMS**

- \* Locate the drawbar assembly
- \* Gather the ends of the right and left trailer arms.
- \* Place the drawbar assembly between the trailer arms and align the holes.
- \* Place one 2-1/4” x 3/8” bolt through each hole, fit 3/8” Nyloc nut to each bolt & tighten securely



- \* Test to ensure the trailer latch is correctly locking the trailer arms in the down position. This is important when trailing the machine.

### **Step 6: ATTACHING WHEELS TO TRAILER ARMS**

- \* Locate the two wheels for the left and right side trailer arms
- \* Check tires for the correct air pressure, approximately 18psi. Do not exceed this pressure. Remove circlips & washers from both axles, slide wheels onto axles with air valves facing outwards. Fit the 25mm flat washer & circlip on the end of the axle, ensure the circlip is fitted correctly in the axle groove.

### **Step 7: CORRECT DAMPENER STRUT OPERATION**

- \* When the roller is in the raised position & the trailer locking catch is released if the dampener strut is operating correctly it should allow the roller to lower to the ground gently, when the roller is resting on the ground push the trailer backwards gently, (do not use excessive force) until the trailer arm rests against the stop. The dampener strut will hold the wheels off the ground whilst rolling.
- \* Drawbar assembly should raise slowly. This prevents the operator from being injured.

### **Step 8: REPLACE ENGINE OIL**

- \* A tag is placed on the engine's On/Off switch indicating you must fill the machine with oil prior to operation. The fluid placed in the machine is designed to keep the inside of the engine from rusting until it is replaced with engine oil. Replace engine oil as per manufacturers specifications.

### **Step 9: TRANSMISSION OIL TANK BREATHER**

- \* Unscrew plastic plug from top of tank & replace with anti-splash breather supplied.

### **Step 10: LUBRICATE ROLLER PIVOT BEARINGS**

- \* There is a grease nipple covered with a plastic cap located on both smoothing head centre ball joint swivels. Apply grease to lubricate fittings.



# OPERATION

## PRE-OPERATION CHECKS

- Check engine as per Honda / Kohler manual
- Ensure steering joystick has no looseness
- Check that foot pedal depresses under normal foot pressure, both directions.
- Ensure that the drawbar locking catch mechanism is securely locked to the main frame bolt & the safety pin is fitted when trailing the roller.
- Check and tighten grub screws fitted to the foot pedal arm, the end bearing lock rings on the rubber coated drive roller and the spiker shaft bearings & all other area's.
- Grease lightly Bearings fitted to Drive Roller, Spiker shaft & Smoothing Head pivot bearings. Replace plastic caps if fitted.
- Oil rod ends sparingly
- Check tire pressure for proper operating pressure (18psi)
- Check for oil leaks - rectify before using machine.

## STANDARD OPERATION PROCEDURES

- Inspect and check that the roller is serviceable prior to departing from workshop.
- Use a suitable towing vehicle to move roller from green to green.
- Maximum recommended towing speed would be equal to a motorized golf buggy. Approximately 4mph/7kph. Towing at excess speed or across rough terrain may cause damage to the machine.
- When approaching the green do not tow roller onto the green to set up, put the roller on the fringe of the green. Put trailer in the up position, start up the roller and drive it onto the green.
- Greens can be rolled in any direction; take care to ensure there are no crease lines produced on the surface.
- It is recommended that you place the smoothing head rollers on the high side of the green when



rolling. This puts more weight on the rubber drive roller and helps give better traction, thus reduces slipping or spinning of the drive roller on the green, depending also on the operators ability. Whilst becoming familiar with the roller, set the throttle at about 1/2 speed. Press the left or right foot pedal down gently but not suddenly. Be smooth with your action, hold in this position until nearing the edge of the green, then take your foot gently off the pedal, the roller will come to a stop. Rest your other foot on the opposite pedal and gently apply the pressure to the pedal. It then starts to move the roller in the opposite direction. Once again be gentle with the pedal, but not sudden. By using the left and right pedal in this manner, will ensure there is no damage to the green & less wear and tear on the equipment and operator.

- The correct procedure for rolling the green is:
  - (A) Select the correct direction to roll the green.
  - (B) Start on one side of the green and work your way across the green in a zigzag fashion, slightly overlapping each lap you roll: this makes sure you miss no part of the green and all of the green is rolled. Avoid coming back across the green to roll missed areas if possible. You should be able to complete the rolling of 18 greens in the same time or quicker than by mowing using a triplex mower.
- When rolling of the green is completed, move the roller onto the fringe, stop the engine, lock the trailer into the trailing position, connect it to the towing vehicle then move off to the next green to be rolled. Do not put the trailer down into the towing position on the green; damage may occur to the green from the roller tires and body.

### POINTS TO REMEMBER

- Make sure the roller is serviceable before rolling.
- Start rolling from the fringe of the green.
- Smooth operation on the foot pedals.
- Pick a point on the other side of the green to roll to.
- Do not look at the green close to the roller; it makes it difficult to steer the roller; look well ahead.
- Use 1/2 throttle until you are proficient at operating the roller.
- Move the steering joystick a little at a time to change direction; excessive movement of the joystick makes it difficult to maintain a straight line.



- Roll in straight lines.
- Do not leave the engine running with the roller parked on the green; the engine vibration will cause roller depressions on the green.
- Move off the green when rolling is complete before putting the trailer in the down position.
- When rolling steep greens and the engine stops, check engine oil level. The engine is fitted with a safety switch; when the engine oil level is low the engine will stop.

### **SPIKER**

- Important, to initially engage the spikers ensure the roller is in motion, once the spikers are engaged they can be left in this position until the spiking operation is completed on that green.

**It is important that the spikers are kept in the raised position at all times other than when spiking the greens.**

### **EMERGENCY BRAKE**

- Depress pedal situated on the floor to stop machine.



# MAINTENANCE

## MAINTENANCE

- Stop engine before performing any maintenance.
- Service the Honda or Kohler engine according to the manufacturers maintenance schedule.

## TRANSMISSION (PUMP, EATON 11)

- Initially, change the oil at 50 hours running time, then;
- Change oil every 500 hours or annually, whichever occurs first
- Change hydraulic oil filter every 500 hours or annually, whichever occurs first.
- Only use the manufacturer's recommended replacement oil filter
- When fitting the filter, follow the instructions supplied with the filter. This will ensure that the filter remains tight and that no leaks occur
- Check all hard line oil pipes for rubbing, excessive vibration, leaks and tightness on a regular basis
- Check transmission oil level on oil tank sight glass. Oil level should remain at a minimum of 25mm (1") and at a maximum of 40mm (1.5") from the top of the tank
- Oil Capacity including filter is 6 liters or 5.3 U.S. quarts
- As a guide to correct transmission oil, see page 3 of this manual.

## STORING

- It is important to store this roller in the towing position. This ensures the trailer strut is in the closed position, protecting the shaft from corrosion, then failure & that the weight is taken off the roller bearings.

## SERVICE OF THE DRIVE CHAIN SYSTEM

- **Replacement** - Use only the chain and sprockets recommended as per the correct spare parts number. Wrong pitch drive chain fitted will cause excessive sprocket wear & possible drive failure.
- **Tensioning the drive chain** - No adjustment is required; the chain tension is automatically



adjusted.

## LUBRICATION

- Lubricate Drive Chain with Chain Oil, WD40 or equivalent (CRC; Penetrene etc.) each time prior to rolling of the Greens

## SERVICE OF SMOOTHING ROLLER BEARINGS

- Whilst the Roller is suspended by the Trailer, check operational smoothness of the bearings fitted to each smoothing roller by rotating the rollers by hand. If bearing tightness or excessive looseness is detected, replace the faulty bearings.

### \* **If bearing are faulty**

- (a) Remove roller shaft bolts from end plates, remove rollers from the heads.
- (b) Screw a bolt back into the shaft end, knock out one end bearing, then use the same shaft to knock out the other end bearing.
- (c) Fit new bearings, replace rollers into the heads, lubricate shaft bolts with an anti seize compound before installing them. Tighten securely & ensure rollers rotate freely when fully tightened.
- (d) Be sure the spacing washers are fitted to the shaft ends before installing the rollers into the heads.

## CHANGE OIL

- Change oil and service as per the manufacturers Servicing Schedule enclosed as a separate insert to this manual.



# MAINTENANCE SCHEDULE

APPLIES TO RS48-11

## MAINTENANCE SCHEDULE - ONGOING

Pre - Delivery	Pre-operating
----------------	---------------

Check Engine Oil	X	X	
Check Transmission Oil Level	X	X	
<b>Beware of contaminants entering the transmission</b>			
Lubricate drive chain with WD40 or equivalent	X	X	
Check Tyres Max P.S.I. 18	X	X	
Check Gas	X	X	
Check Smoothing Roller Bearings	X	X	
Check Drive Roller Bearings	X	X	
Grease Trailer Arm Pivot Bearings	X	X	
Check for loose Nuts & Bolts	X	X	

## LUBRICANTS & REPLACEMENT SCHEDULE

Monthly	3 Monthly	6 Monthly	12 Monthly
---------	-----------	-----------	------------

	As per Manufacturers Handbook			
	Every 500 hours	or		
Renew Engine Oil				
Renew Transmission Oil				X
Renew Transmission Oil Filter				X
Grease Trailer Arm Pivot Bushes	X			
Lubricate Chain Tensioner Arm Pivot		X		
Renew Smoothing Roller Brgs			X	X
Renew Drive Roller Bearings				X
Renew Chain Tensioner Sprocket Bearings				X
Renew Drive Chain				X
Replace Foot Pedal Struts				
Replace Trailer Strut				





## FAULT FINDING

### ROLLER WILL NOT MOVE ONE OR EITHER WAY

- Check: Chain is okay.
- Sprockets worn or slipping on shaft.
- Foot control not operating - check all arms are secure .
- For Sheared Sprocket Keys.

### ROLLER WILL NOT STEER

- Check Woodruff Key is in place & not sheared.
- Rod ends are connected to smoothing roller head and the steering arm.
- Centre swivel bearing on top centre of smoothing rollers has not seized.
- Connecting rod is in place & serviceable.

### ROLLER HAS EXCESSIVE VIBRATION

- Check: Disconnect engine-to- transmission and isolate the drive chain to determine whether the problem is in the engine or into the transmissions.
- If engine is at fault contact your nearest engine agent for rectification.
- If the transmission is at fault, repair or replace as necessary, or seek professional advice from a local Eaton Service Center.
- \* Check drive coupling for serviceability.

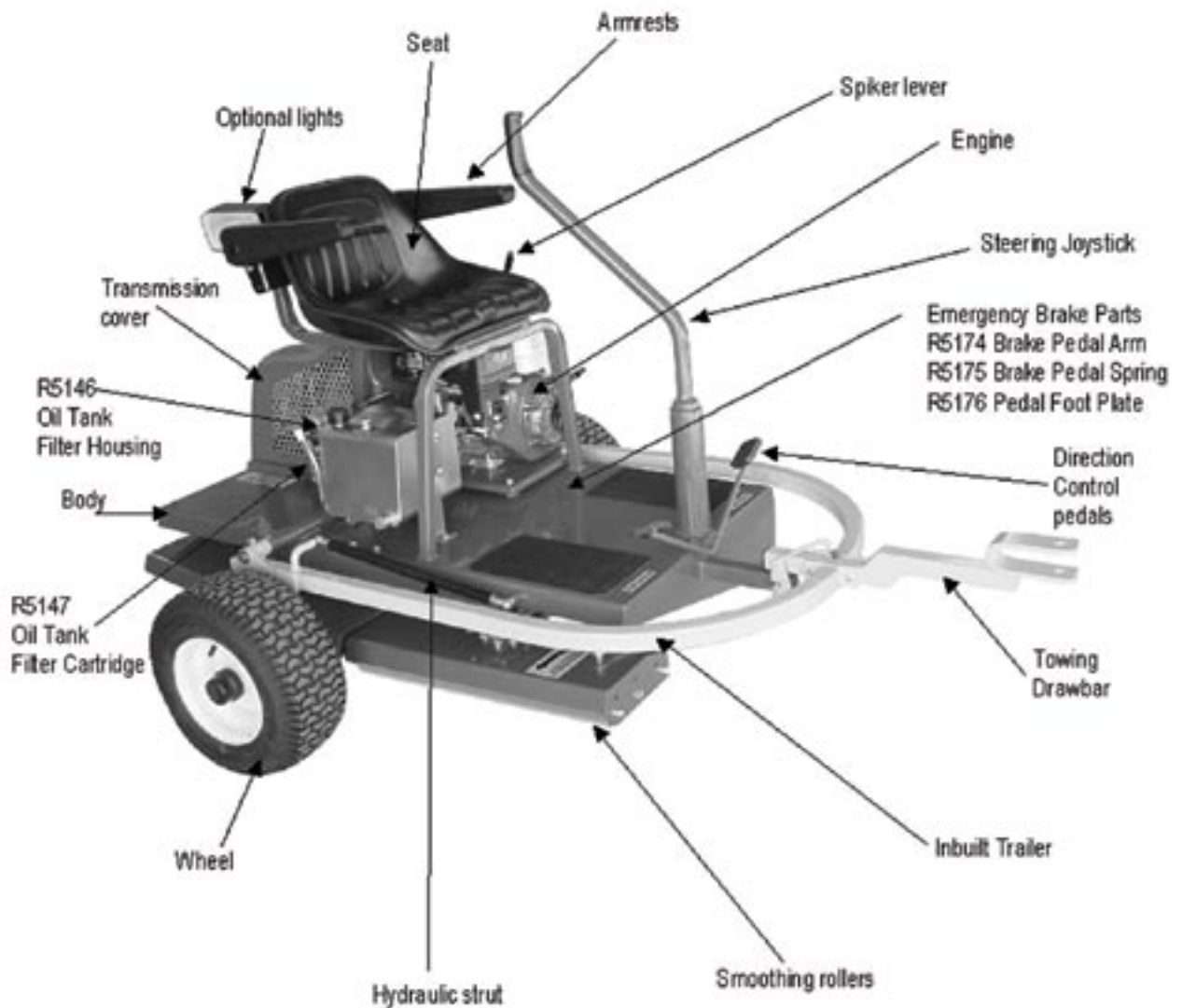
### SMOOTHING ROLLERS SEIZED

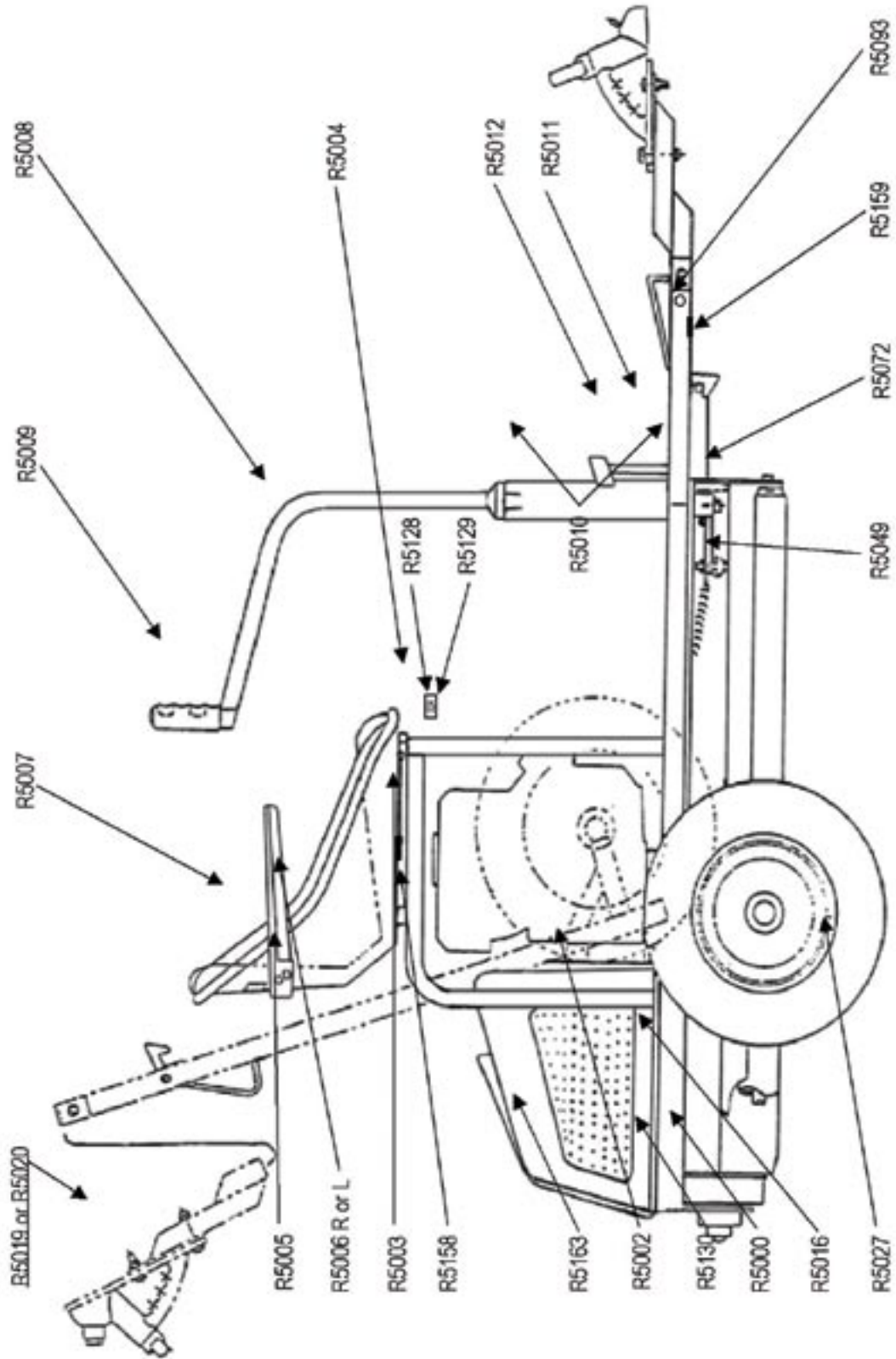
- Check: Bearing have not seized.

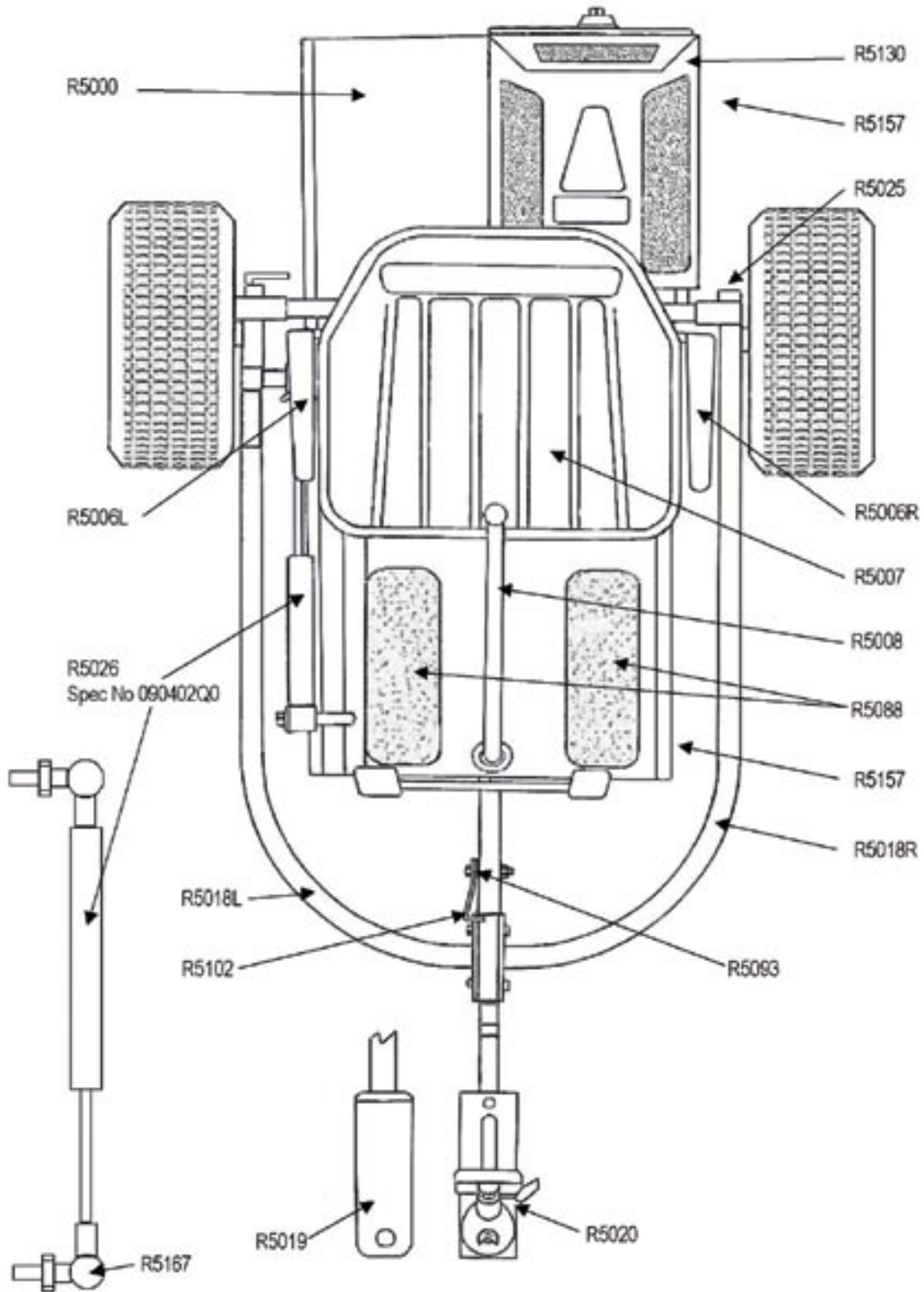
### RUBBER DRIVE ROLLER WILL NOT ROTATE

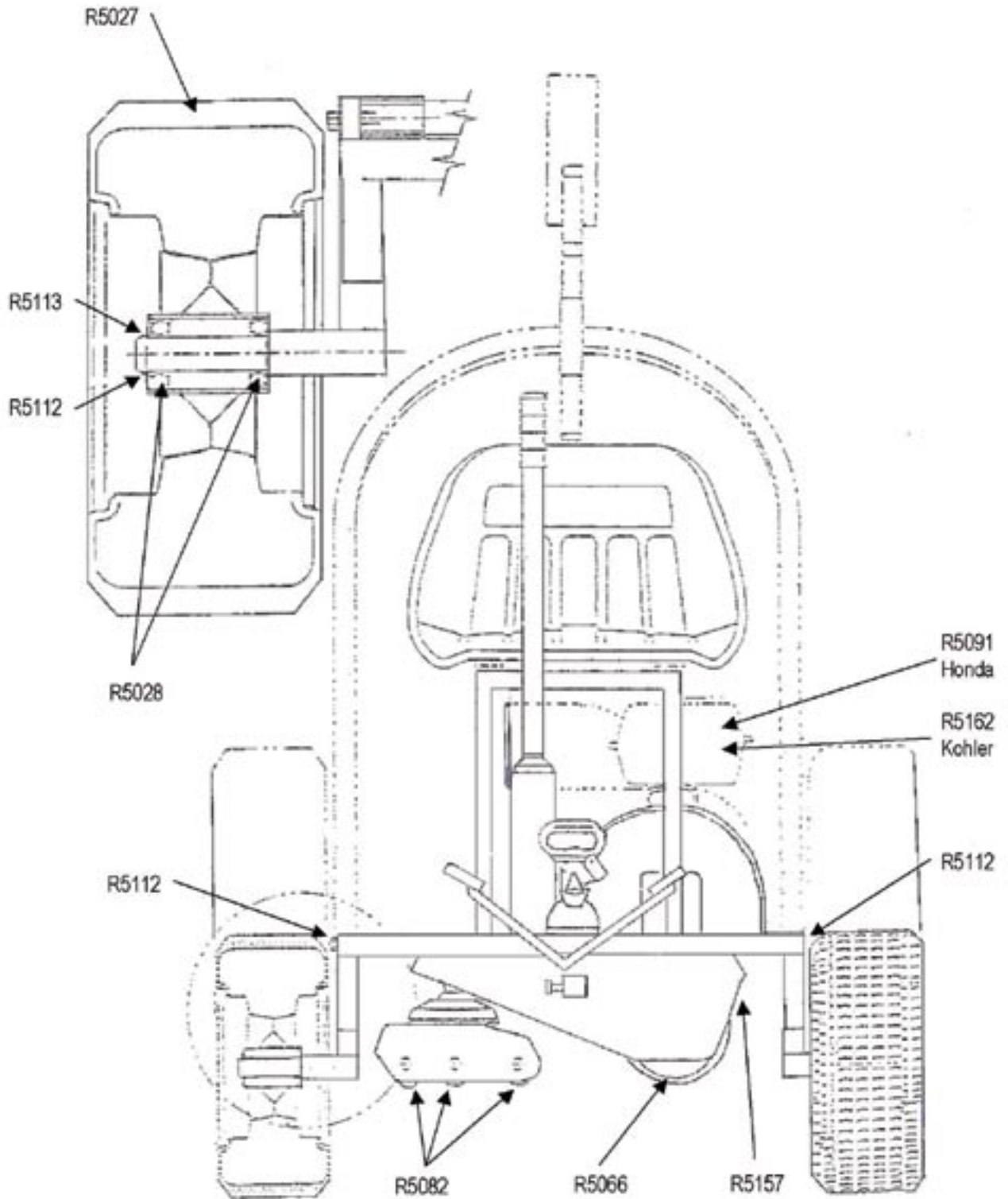
- Check: Roller shaft end bearings have not seized.
- Broken chain.
- Slipping sprockets.
- the Park Brake is not locked on.
- Debris is not locking the roller.

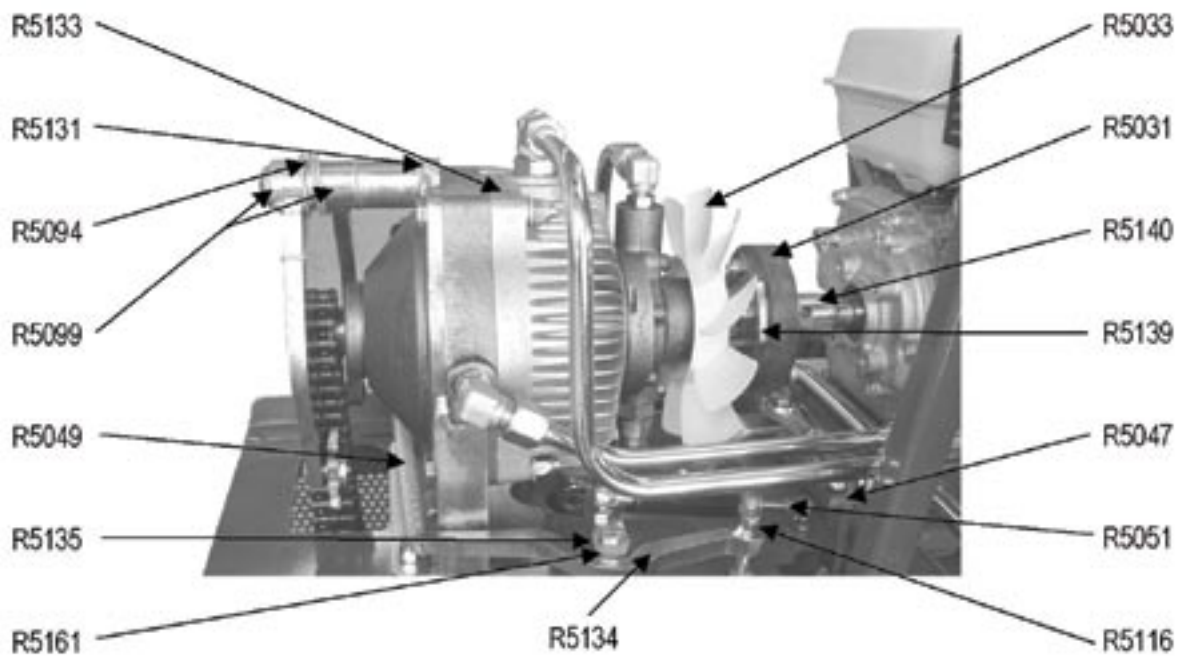
# MACHINE COMPONENTS

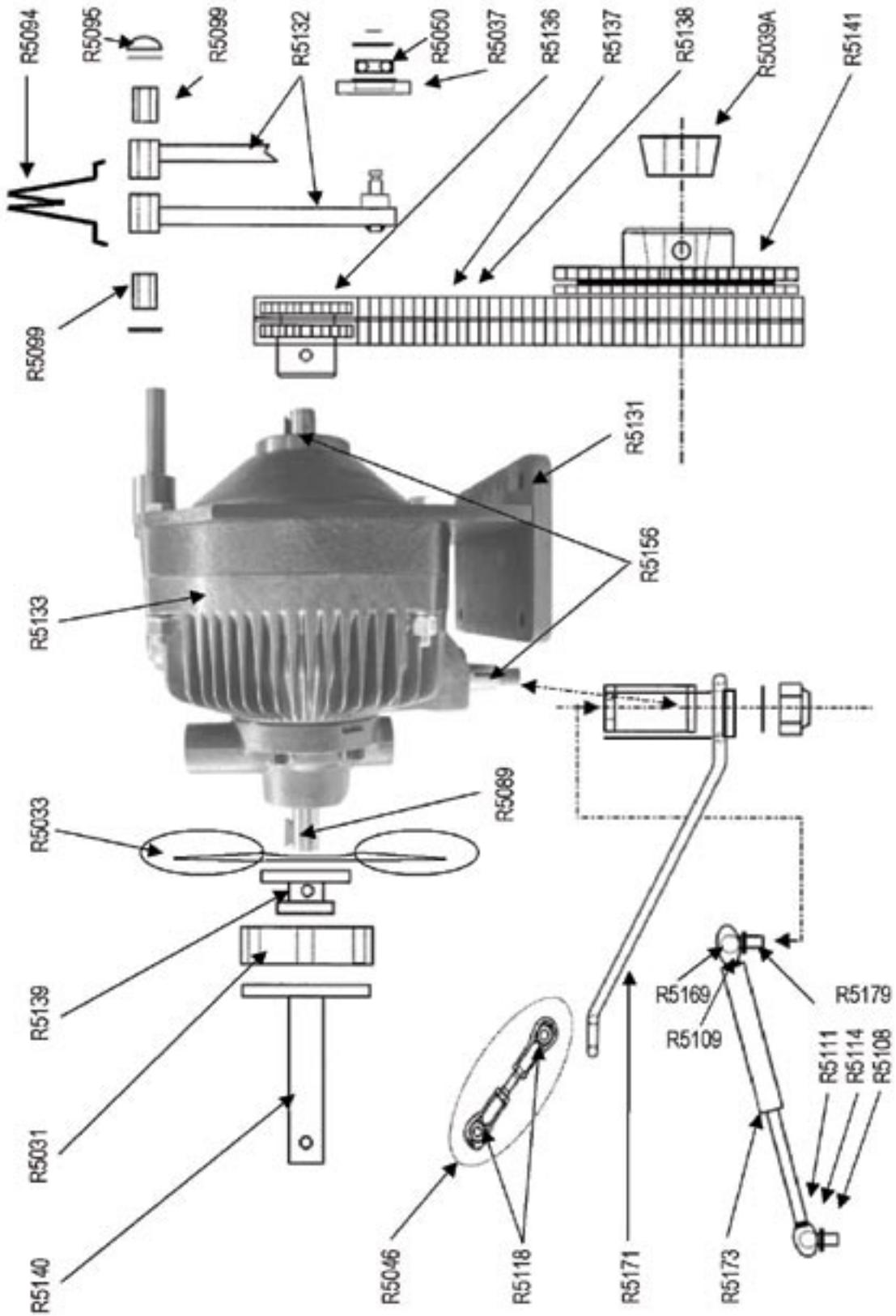


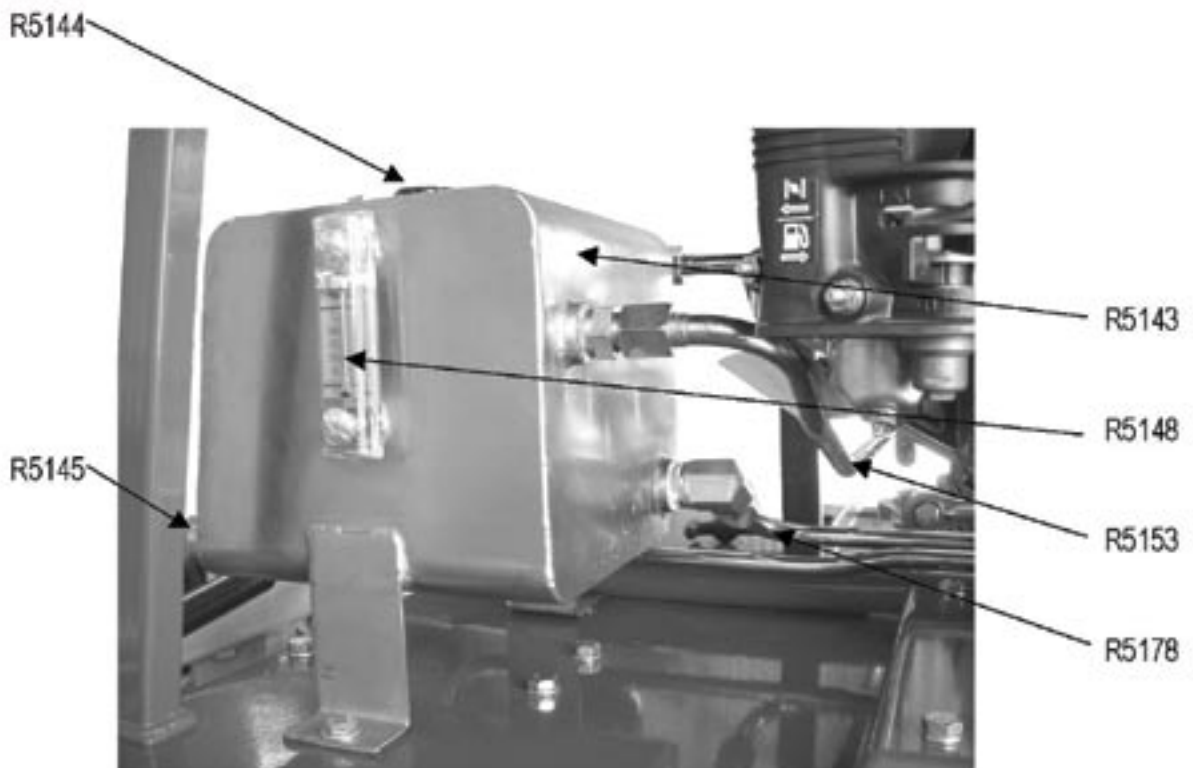
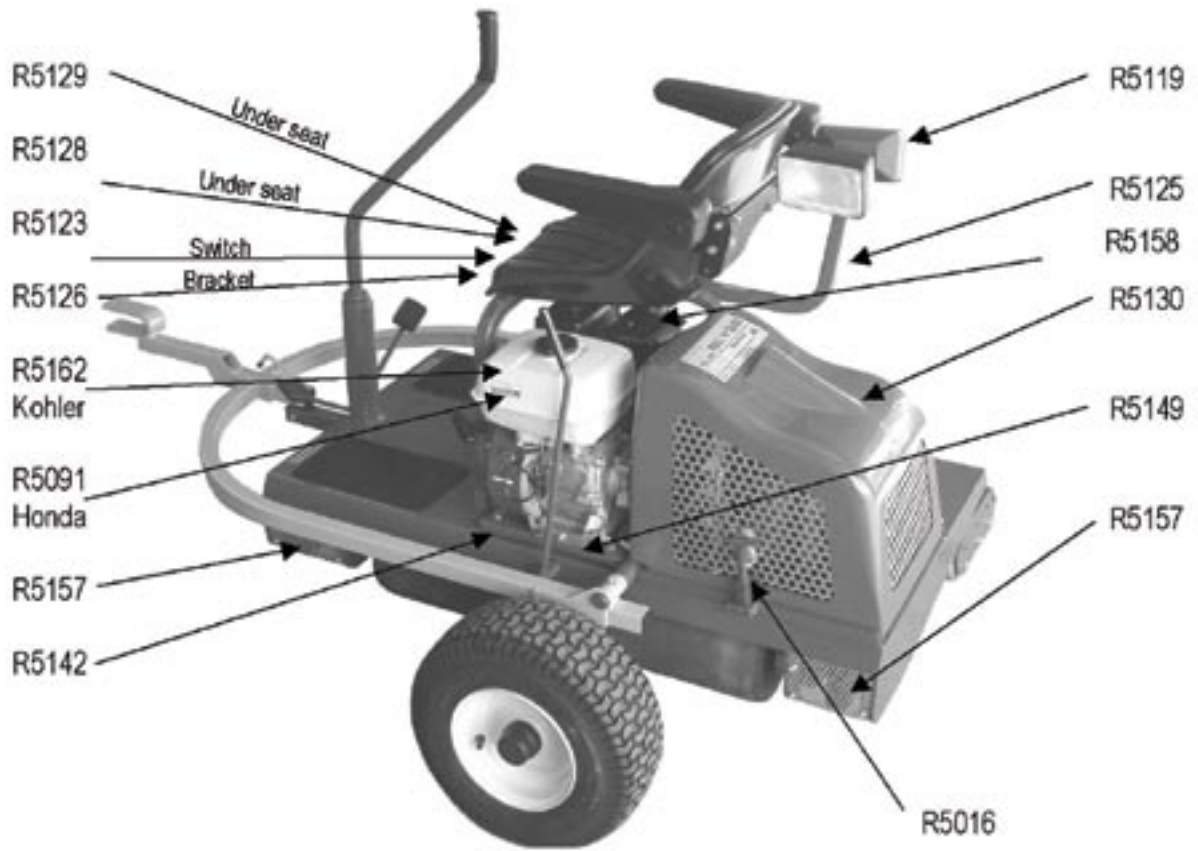




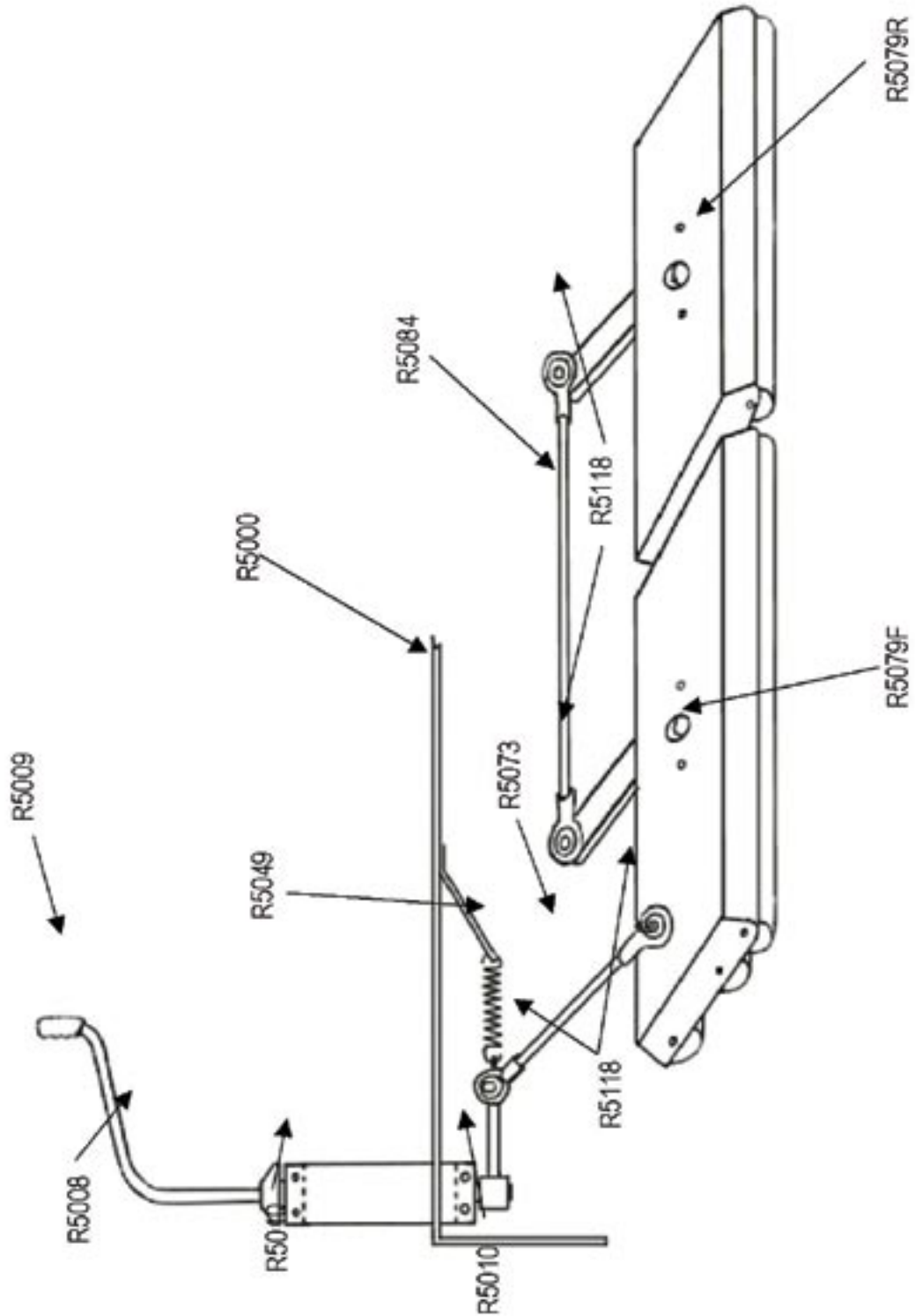


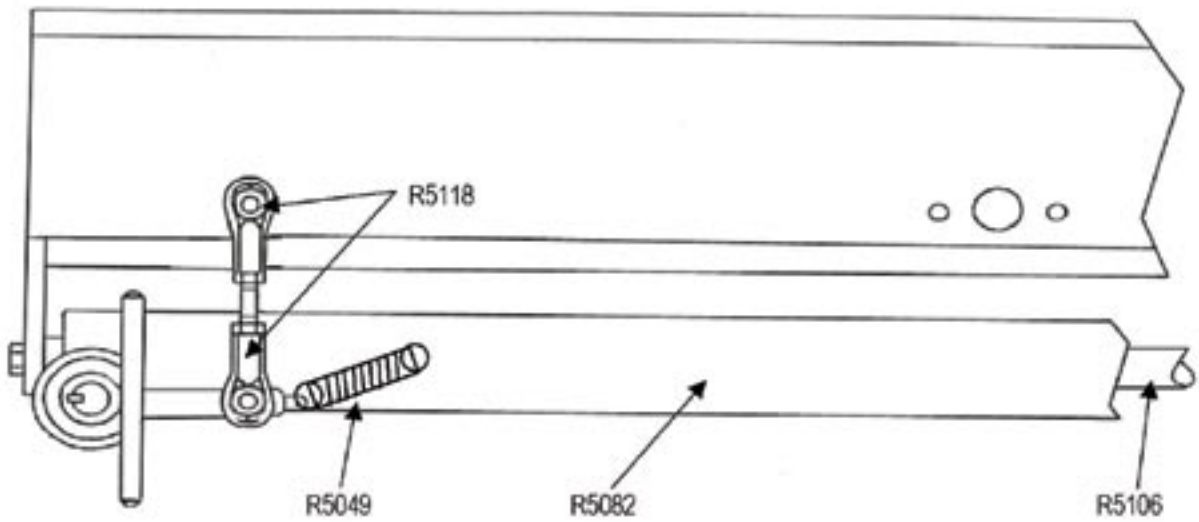
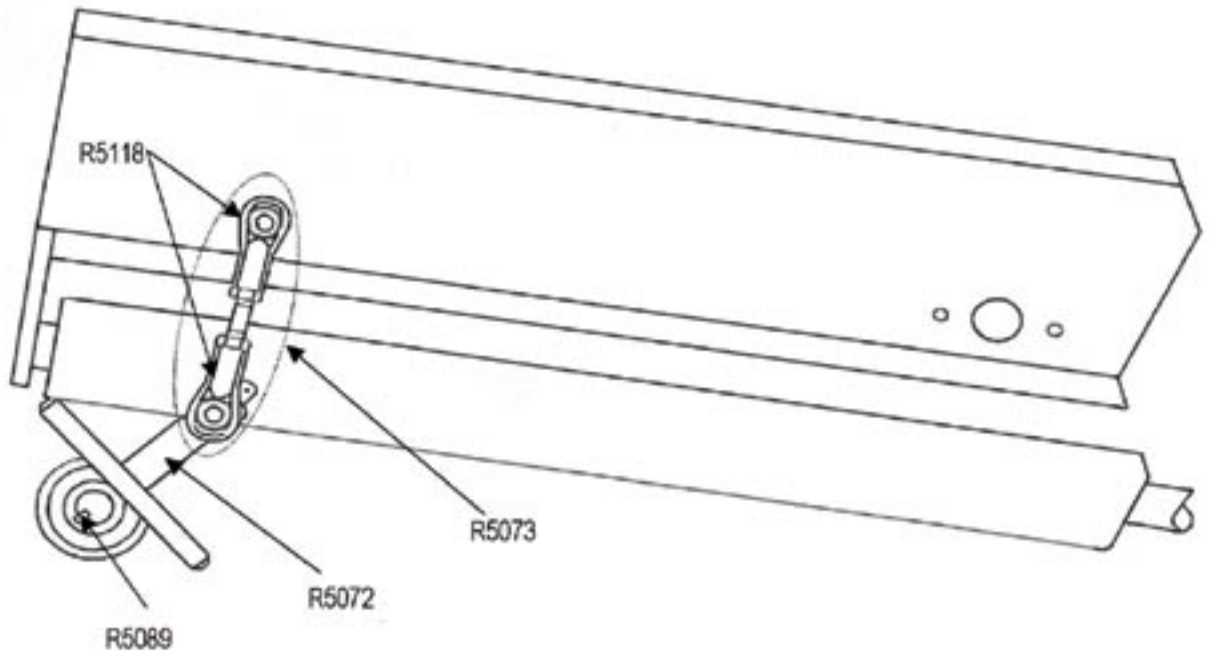


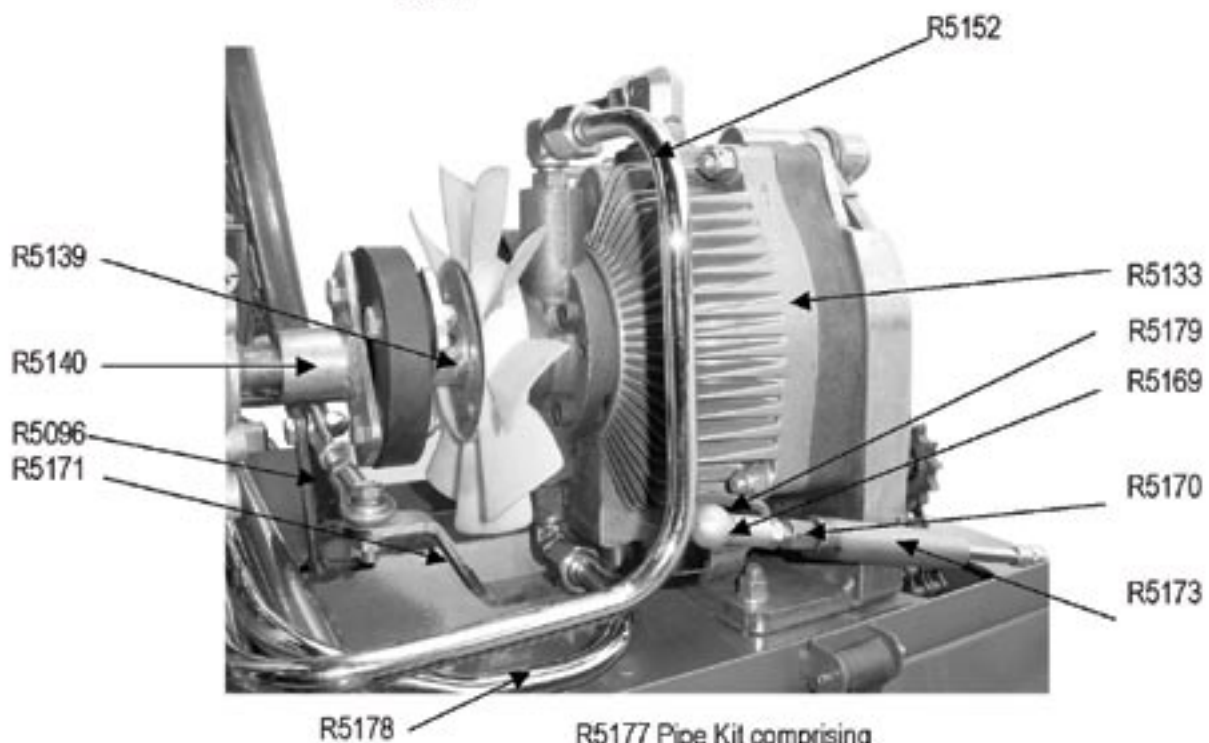
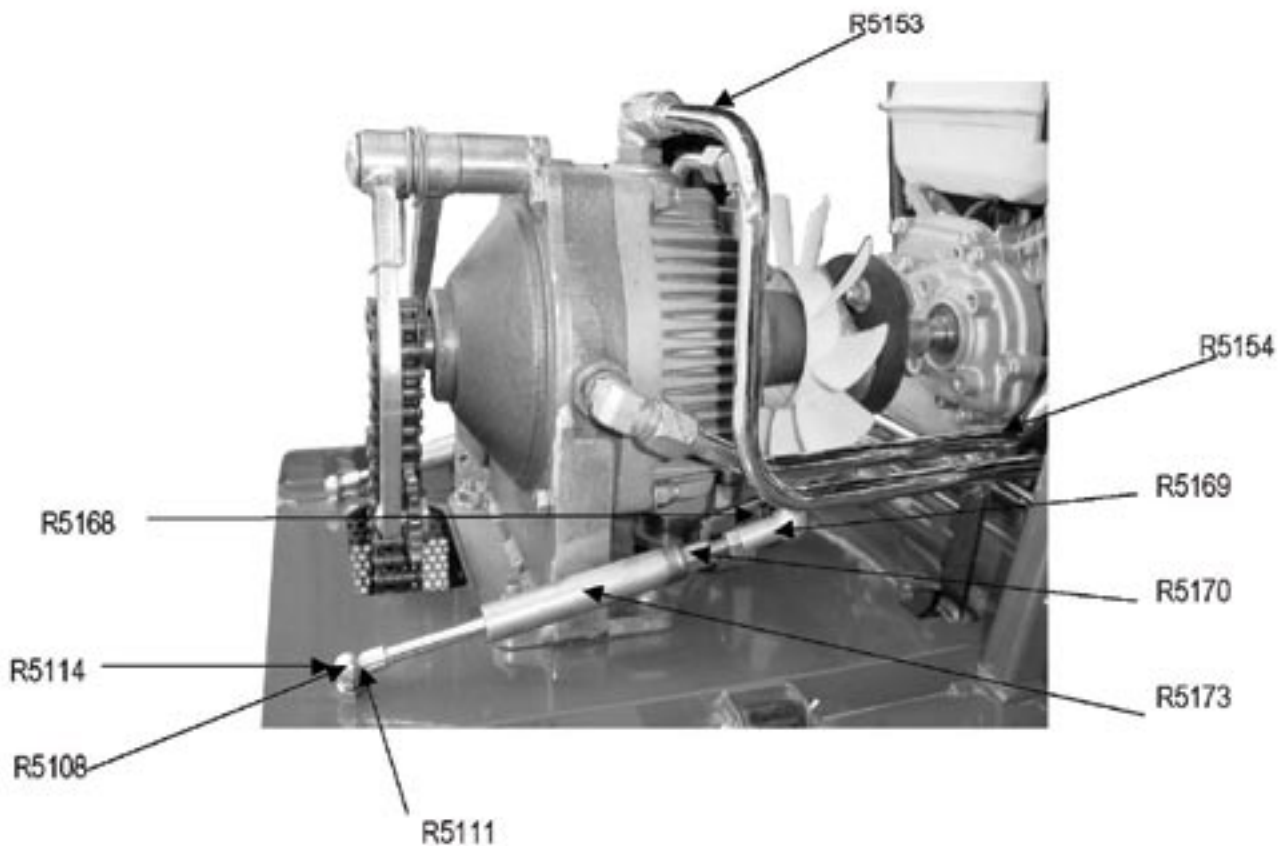




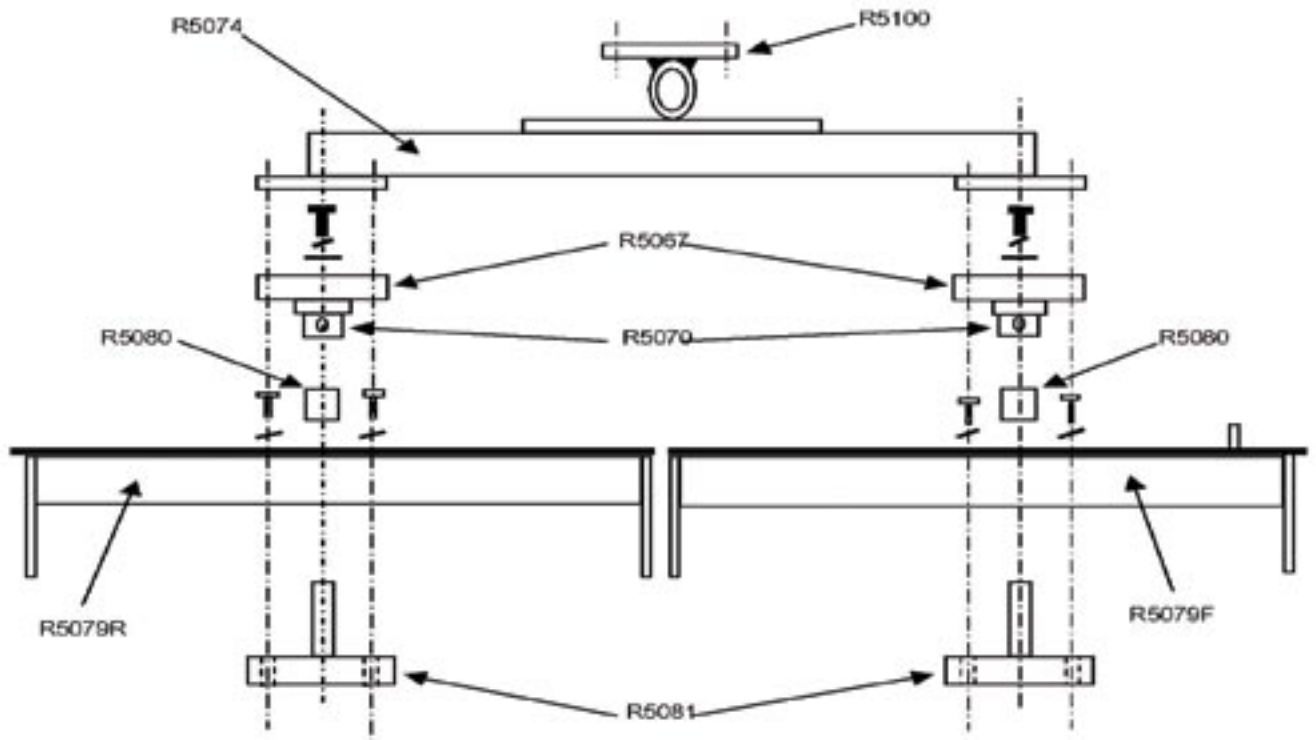


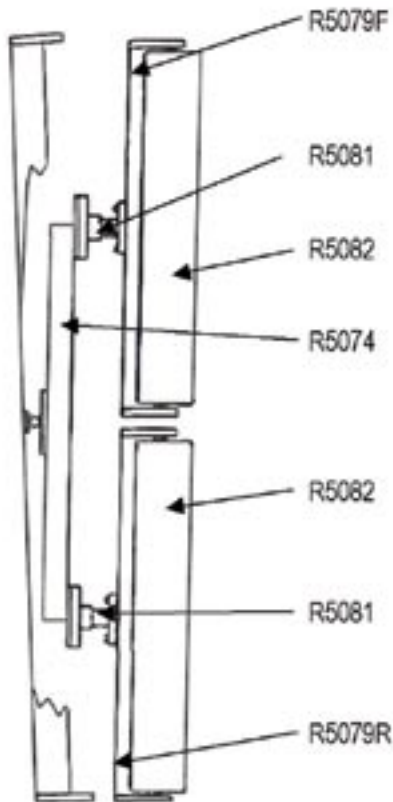
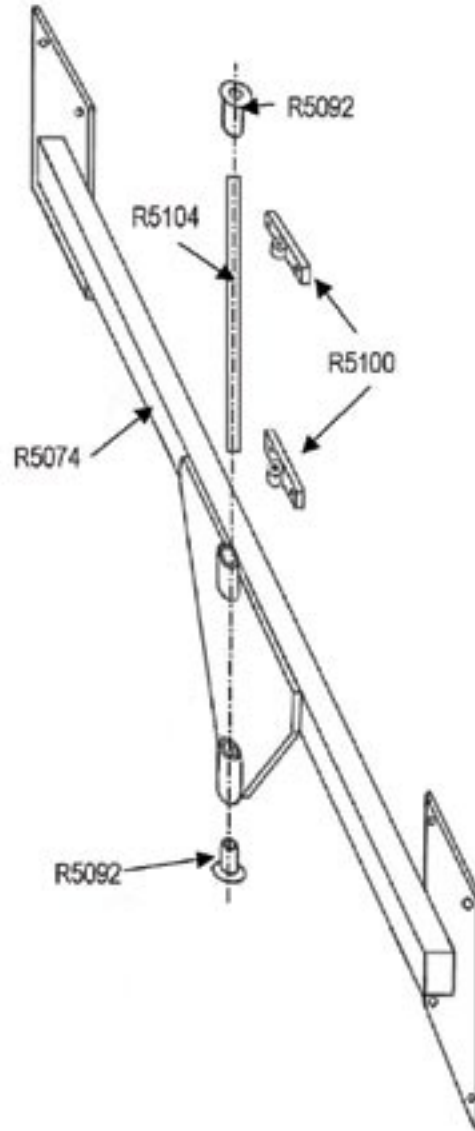
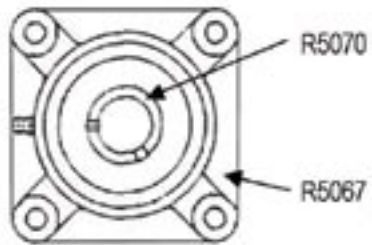


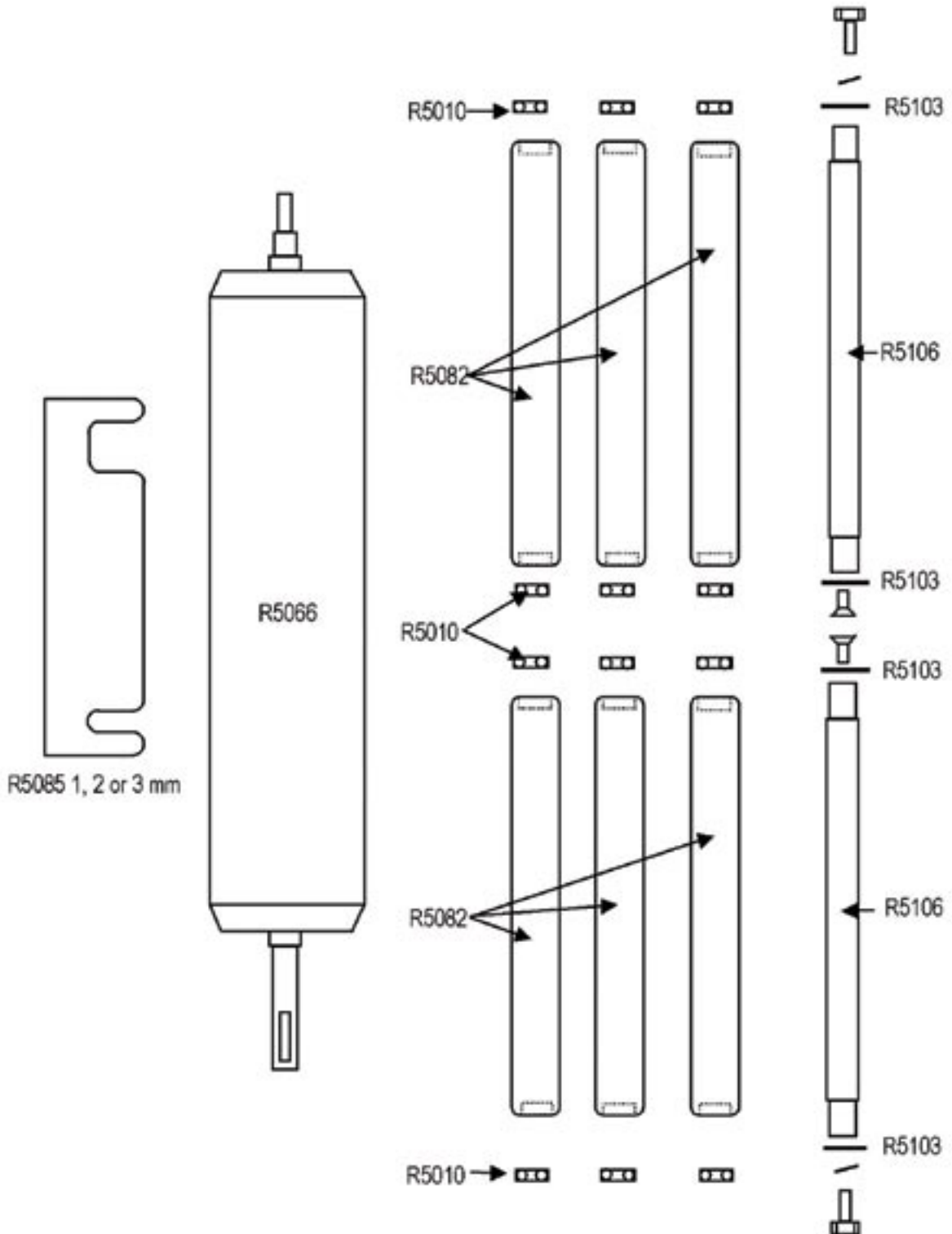




R5177 Pipe Kit comprising R5152;R5153;R5154;R5178

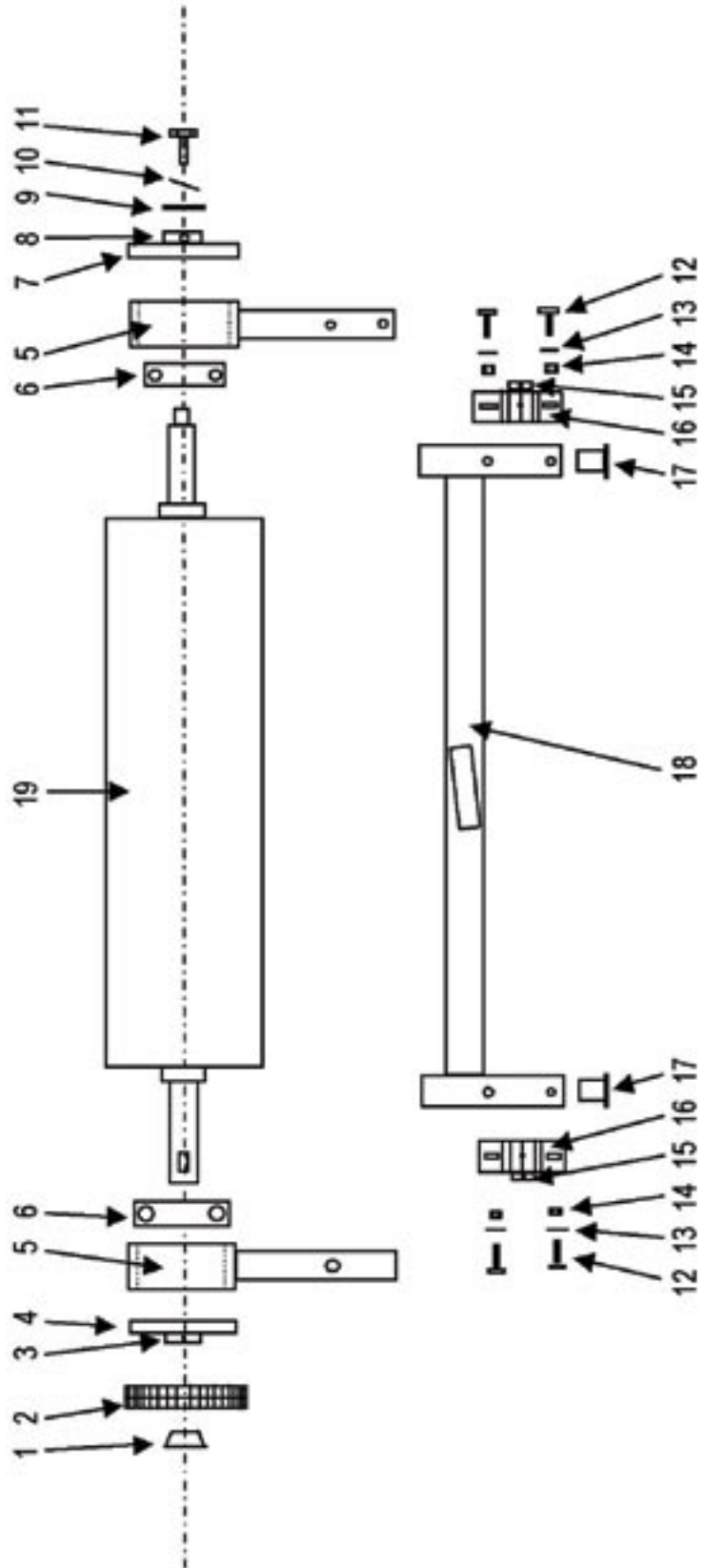


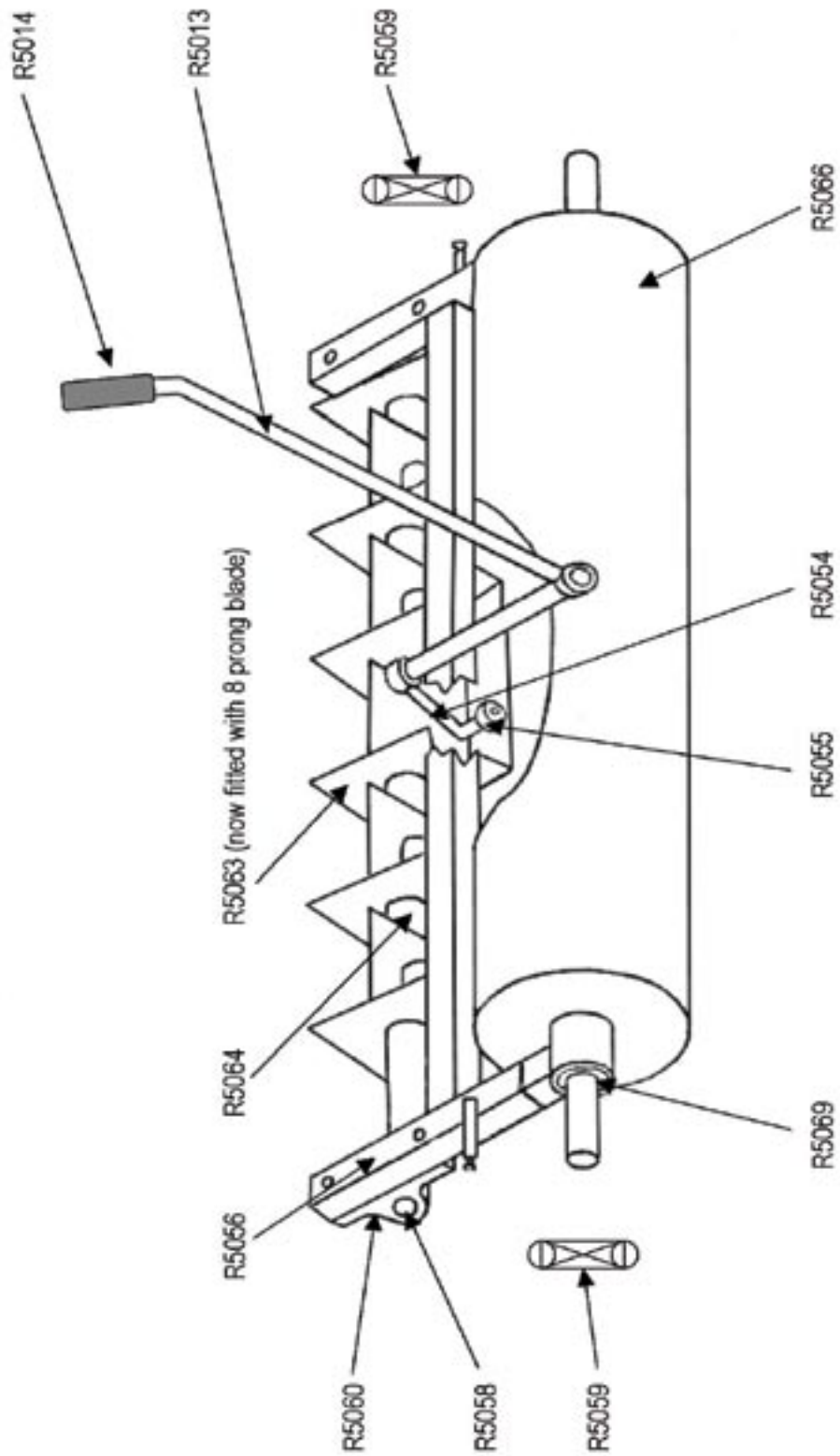




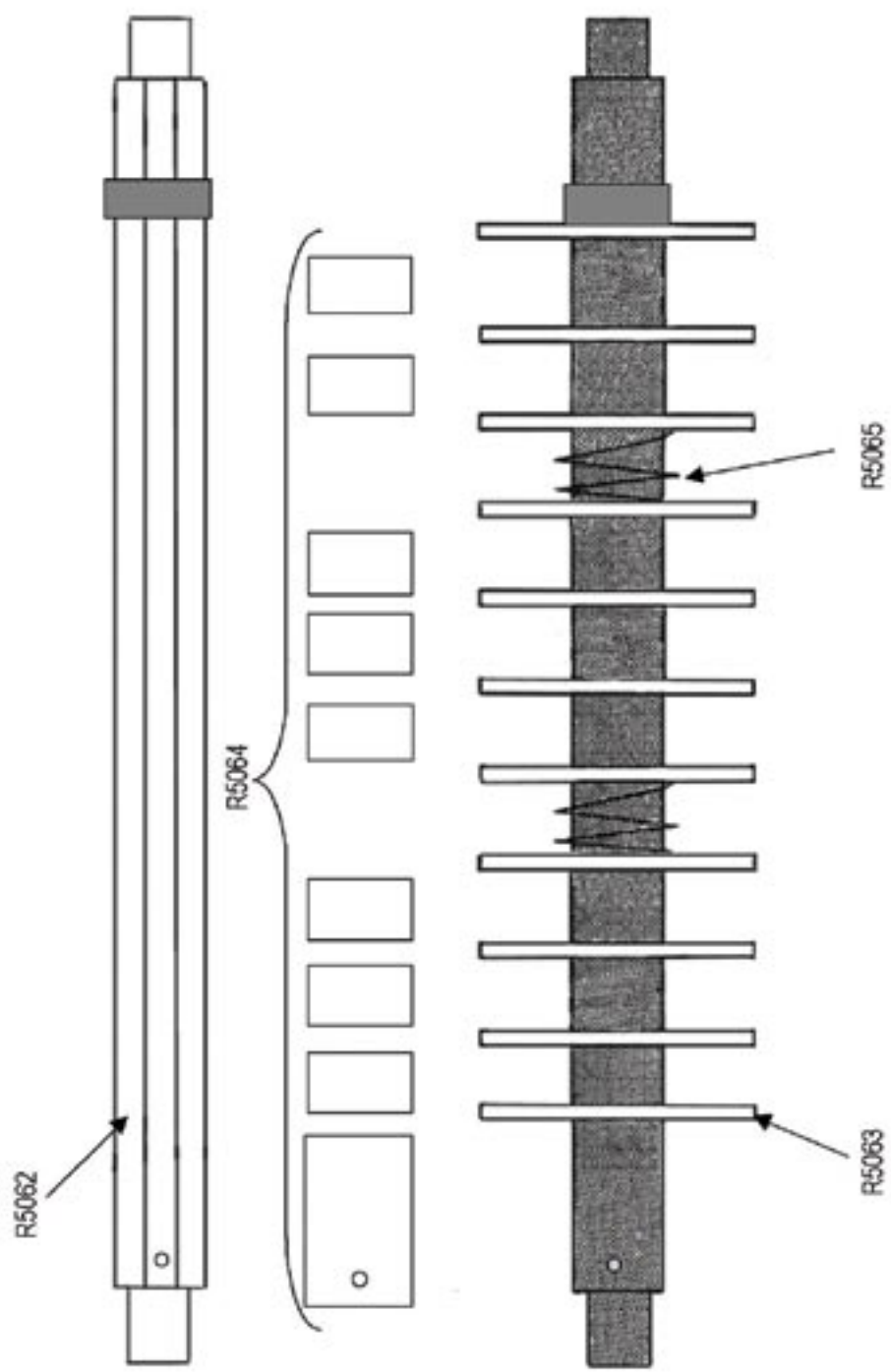
**ROLLER ASSEMBLY LAY OUT**

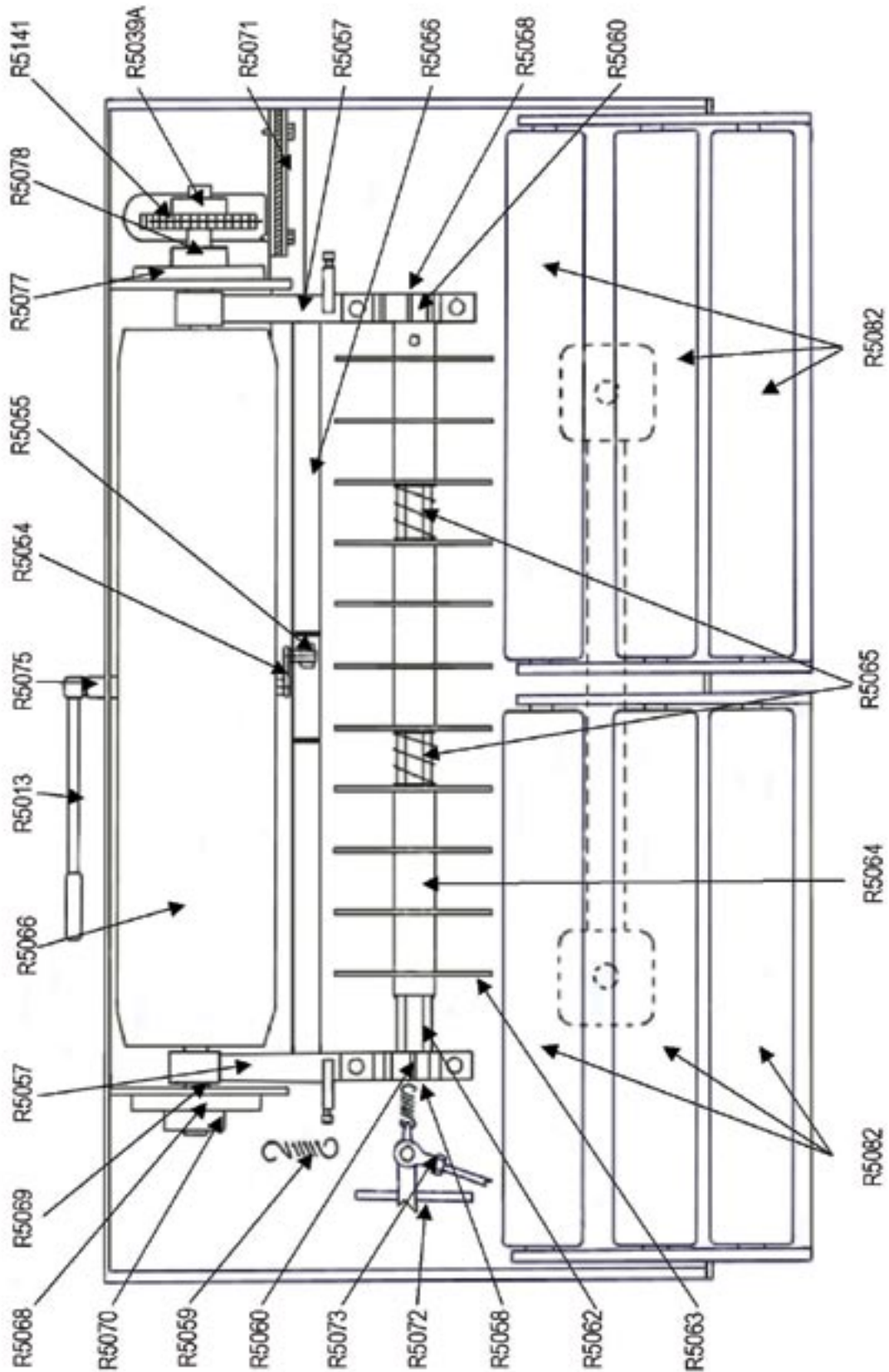
- |           |                          |                           |
|-----------|--------------------------|---------------------------|
| 1. R5039A | 7. R5068                 | 13. Flat Washer 38" x 34" |
| 2. R5141  | 8. R5070                 | 14. Nut 38" NF Nyloc      |
| 3. R5078  | 9. Flat Washer 38" x 34" | 15. R5058                 |
| 4. R5077  | 10. Spring Washer 38"    | 16. R5060                 |
| 5. R5057  | 11. Bolt 38" x 34"       | 17. Cap 30mm x 30mm       |
| 6. R5069  | 12. Bolt 38" x 2 14"     | 18. R5056                 |
|           |                          | 19. R5066                 |

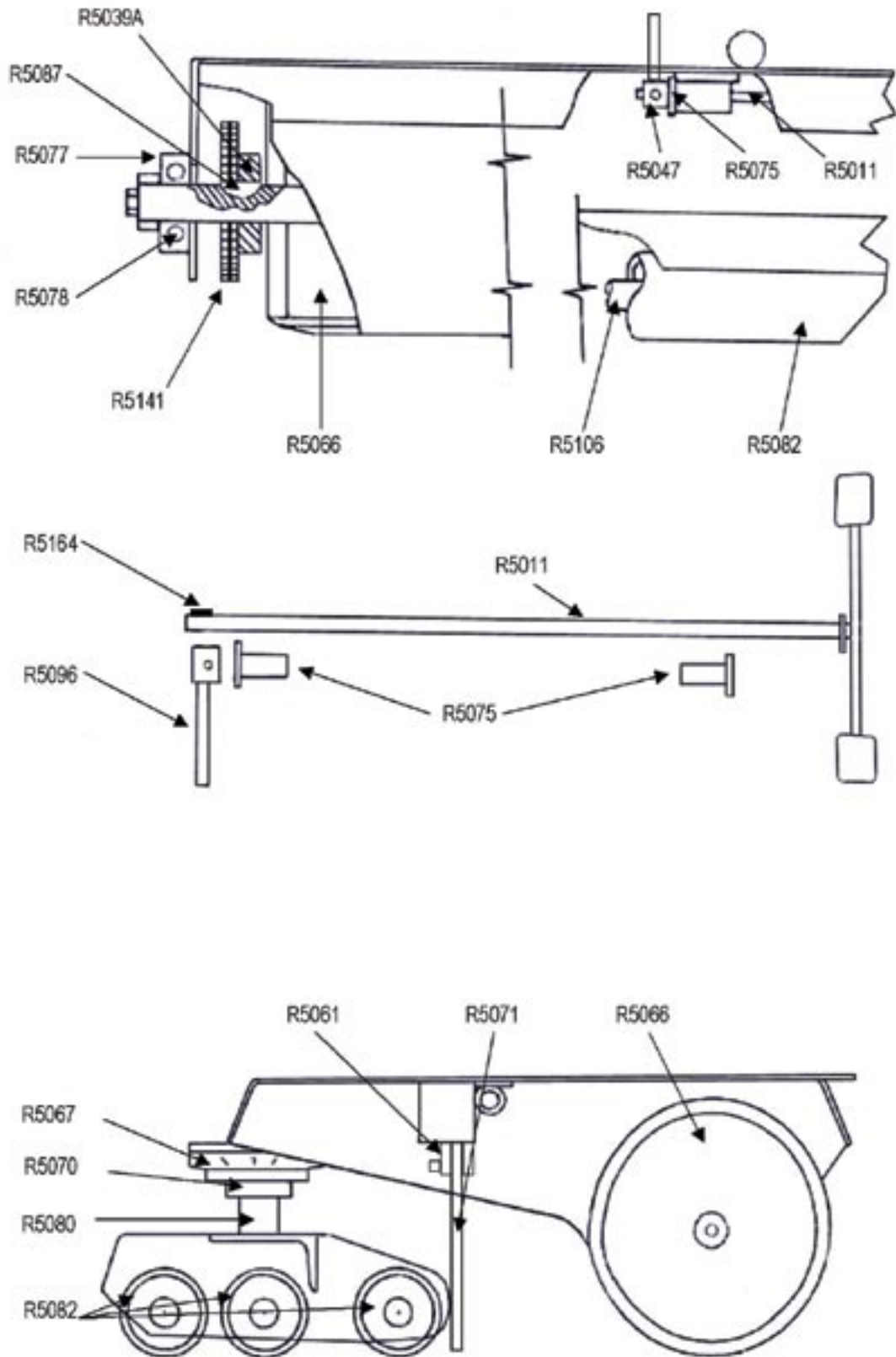




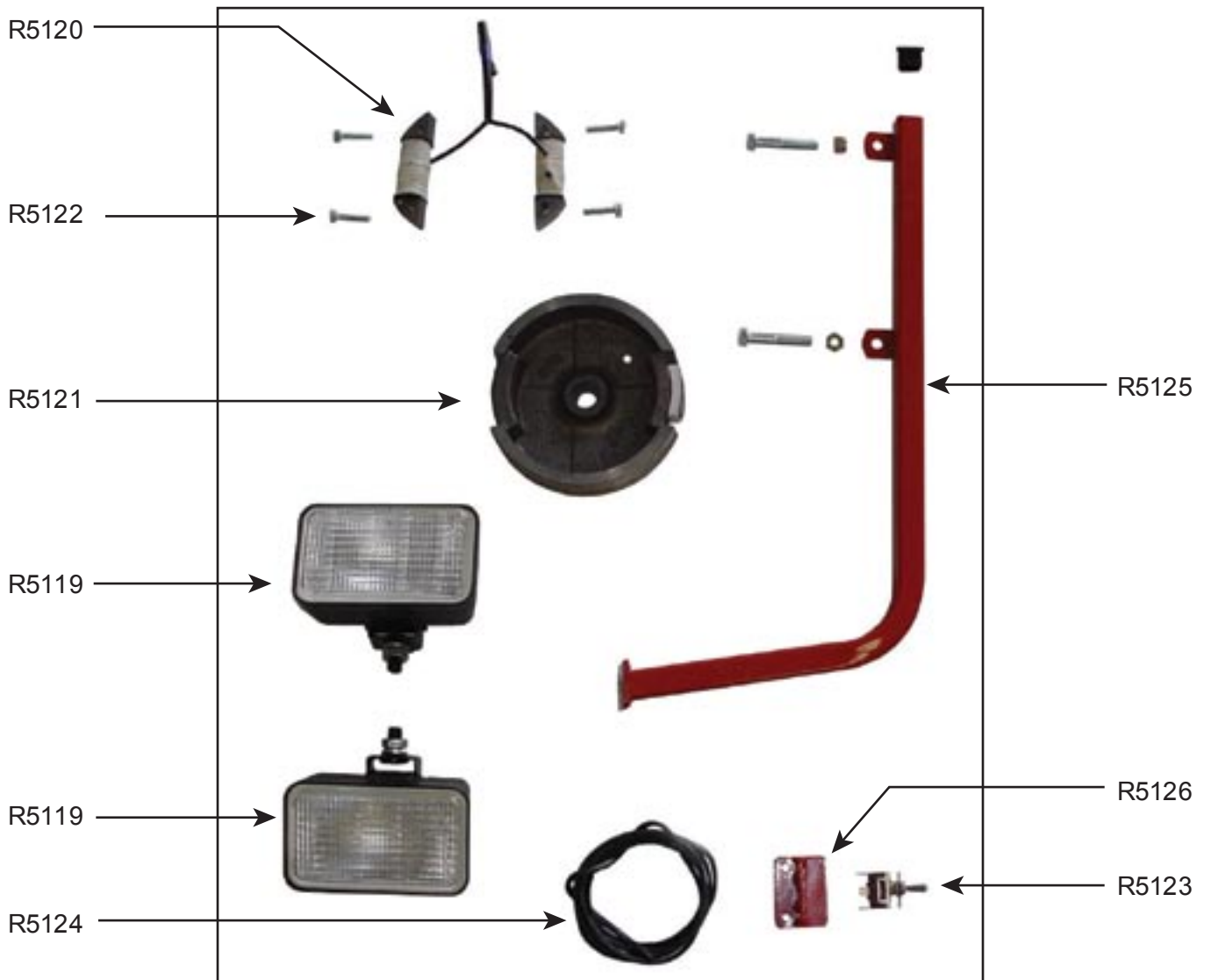




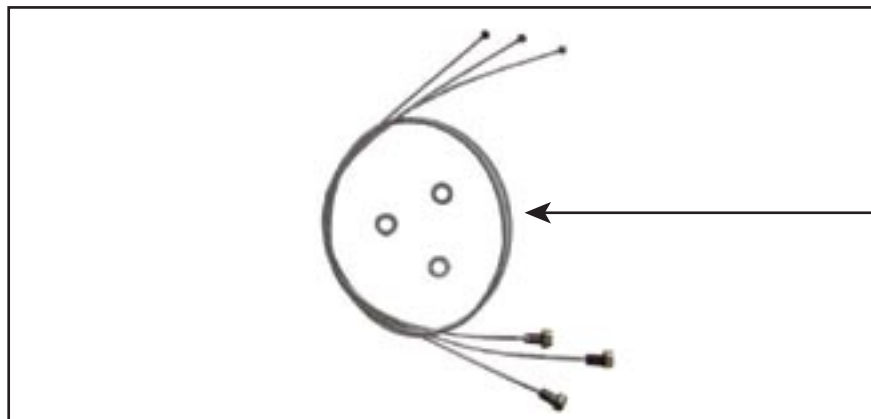




## OPTIONS



Light Kit



Wire Scrapers



# LABELS



Name & Model attached to rear of Transmission Cover



Attached to the Body beside the Transmission Cover



Attached to the Body under the Foot Pedals



Attached to the front top of the Smoothing Head



Attached to the front of both trailer arms at the Release Catch position



## PARTS LIST

<b>PART NO.</b>	<b>PAGE NO.</b>	<b>DESCRIPTION</b>
R5000	22	Body; Main
R5002	22,28	Frame; Seat Mount
R5003	21,28	Plate; Seat Base
R5004	17,21	Pin; Seat Base
R5005	17,21	Bracket; Arm Rest Support
R5006R	17,21	Rest; Arm; RH
R5006L	17,21	Rest; Arm; LH
R5007	17,21	Seat; Pan; P2
R5008	17,28	Joystick
R5009	17,28	Grip; Hand; Joystick
R5010	25	Bearing; 6304
R5011	27,28	Pedals; Foot
R5012	27	Pad; Rubber; Foot Pedal
R5013	22,23,28	Lever; Spiker Handle
R5014	22,23	Grip; Lever; Spiker Handle
R5016	17	Catch; Cover; Transmission
R5018R	26	Arm; Trailer; RH
R5018L	26	Arm; Trailer; LH
R5019	26	Drawbar; Pin Type
R5020	26,34	Ball Coupling; 50mm (2")
R5020A	26,34	Drawbar to suit R5020
R5025	26	Plug Kit; Plastic; Trailer
R5027	26	Tyre & Wheel Complete
R5028	26	Bearing; 6205; To suit R5027
R5031	19,21	Coupling; Rubber
R5033	19	Fan
R5037	20	Sprocket Kit; Simplex
R5039A	23	Bush; Taper Lock
R5046	19	Rod Unit; Connecting Arm; Foot Pedal to Yoke; Transmission; Complete
R5049	25	Spring; Steering Return
R5050	20	Bearing; 6000
R5054	23,28	Arm; Spiker Engaging
R5055	23	Bearing; 6201; Arm; Spiker Engaging
R5056	23,28	Frame; Spiker
R5057	23	Arm; Bearing Carrier; Spiker Frame
R5058	23	Bearing; B4
R5059	23	Spring; Return; Spiker Frame
R5060	23	Housing; P204; for B4



R5061	22,28	Strap; Mud Flap
R5062	23	Shaft; Hexagon; Spiker
R5064	23	Spacer; Set; Spiker Shaft
R5065	23	Spring; Spiker Spacer; fits on Hex Shaft
R5066	22,23	Roller; Drive
R5067	25	Housing; F205; 4 hole; for R5070 Bearing
R5068	23	Housing; LFL5J; 2 hole for R5070 Bearing
R5069	23	Bearing; 6006; Fits R5057
R5070	23,25	Bearing; B5
R5071	22	Mud Flap
R5072	22,25	Arm; Steering; Attaches to Joystick
R5073	24	Rod; Steering Arm to Smoothing Head; Complete
R5074	24,28	Bracket; Swivel; Smoothing Head
R5075	27	Bush; Nylon; Black
R5077	23	Housing; LFL6J; for R5078 B6 Bearings
R5078	23	Bearing; B6
R5079F	24,25,28	Head; Smoothing; Front; Frame only
R5079R	24,25,28	Head; Smoothing; Rear; Frame only
R5080	25	Spacer; for R5081 Carrier
R5081	25	Carrier Mount; Bearing; Smoothing Head
R5082	25	Roller; Smoothing
R5084	25	Rod; Connecting Smoothing Heads; Complete
R5085	21	Shim 1,2 or 3mm Thick; Honda/Kohler Engine
R5087	23	Key, Woodruff
R5088	17	Mat; Foot
R5089	19,25	Key; Woodruff
R5091	21	Engine; 5.5 hp; Honda
R5092	24	Bush; Nylon; Red; Smoothing Head; Swivel
R5093	26	Spring; Coil; Drawbar
R5094	20	Spring; Arm; Chain Tensioner
R5095	20	Washer; Capped
R5096	19,27	Arm; Foot Pedal; for Eaton 11 Transmission
R5099	20	Bush; Bronze; for Chain Tensioner Arms
R5100	24,28	Block; Mounting; set of 2 – for Pivot Shaft
R5102	26	Catch; Front Trailer; No Spring Tab; use Spring R5093
R5103	25	Washer; Fits Smoothing Rollers Shafts R5106 & G4075
R5104	24,28	Shaft; Pivot; to suit R5092 Bush; Red; Nylon; in R5074 Bracket
R5106	25	Shaft; Stepped; Smoothing Roller
R5108	19,27	Ball Fitting; Strut; Foot Pedal



R5109	19,27	Retainer; Clip; for R5115 Strut Cup End
R5111	19,27	Retainer; Clip; for R5114 Strut Cup End
R5112	26	Circlip; External; 25mm
R5113	26	Washer; Flat
R5114	19,27	Cup End; Strut; Foot Pedal
R5118	19,24,25	Rod End
R5119	17, 34	Light; 50 Watt
R5128	18	Bracket; Hour/Tach Meter
R5129	18	Meter; Hour/Tach
R5130	17	Cover; Transmission; Eaton 11
R5131	19,20	Bracket; Transmission; Eaton 11
R5132	18,20	Arm; Chain Tensioner
R5133	19,20	Transmission; Eaton 11
R5136	20	Sprocket; 11 Tooth; Duplex
R5137	20	Chain, Duplex; Eaton 11 Transmission
R5138	20	Joiner; Chain; Duplex Eaton 11 Transmission
R5139	19	Coupling; Transmission; Eaton 11 Honda 5.5hp or Kohler 6hp
R5140	19,21	Coupling; Engine; Honda 5.5hp or Kohler 6hp – Eaton 11
R5141	22,23	Sprocket; 27tooth; Duplex; Drive Roller; Eaton 11 transmission
R5142	21,22	Cushion; Rubber; for Engine Base Plate
R5143	18	Tank; Stainless Steel
R5144	18	Breather; Tank
R5145	18	Plug; Drain; Tank
R5146	18	Housing; Filter; Tank
R5147	18	Cartridge; Filter; Tank
R5148	18	Gauge; Sight; Tank
R5149	21,28	Plate; Mounting; Engine
R5152	18	Pipe; Oil; B
R5153	18	Pipe; Oil; C
R5154	18	Pipe; Oil; D
R5156	19,20	Key; Woodruff; to suit R5133 Eaton 11 Transmission
R5157F	17	Mesh; Body; Front
R5157R	17	Mesh; Body; Rear
R5158	18	Rubber Strip; Frame; Seat
R5159	17	Rubber Strip; Rest; Trailer
R5162	21	Engine; Kohler; 6 hp
R5163	17	Sticker; Safety Pack
R5164	19,23,27	Key; Woodruff
R5167	27	End; Bolt Type; Strut; Trailer
R5168	19,27	Spacer; Stainless Steel; Strut End; Transmission





R5169	19,27	Cup End; Long for R5173 Transmission Strut
R5170	19,27	Bolt; Adjuster; for Transmission Strut
R5171	19	Yoke; Eaton 11 Transmission; to suit Rear Struts
R5173	19,27	Strut; connects to R5171 Yoke; Complete
R5174	28	Arm, Brake Pedal
R5175	22	Spring, Brake Pedal
R5176	22,28	Plate; Foot; Brake Pedal
R5177	18	Pipe; Oil; Kit
R5178	18	Pipe; Oil; A
R5179	19,27	Ball Fitting; Large Flange
R5180	20	Circlip, External
R5182	17,21	Circlip, External
R5183	20	Circlip, Internal
R5184	19	Rod; Connects Foot Pedal Arm to Transmission Yoke
R5185	24,25	Rod; Connects Steering Arm to Smoothing Head
R5187	25,28	Tube; for Rod R5084
R5188	20	Sprocket 12 tooth: Supply R5037 Sprocket Kit
R5189	23	Spiker Blades, 8 point
R5194	25	Rod; Connects Right & Left Smoothing Heads
R5195	21	Key Honda & Kohler Engines
R5196	26	Safety Pin and Chain
R5197	18	Rubber Strip; Oil Tank Base
R5199	27	Strut Trailer

### Options Available

R5127	34	Light Kit – Suits Honda 5.5 hp only
R5119	34	Light 2 Off (50W)
R5120	34	Coil; Lighting; for Honda 5.5hp
R5121	34	Flywheel, Honda 5.5hp
R5122	34	Bolt; Flange
R5123	34	Switch; Light
R5124	34	Harness; Wire
R5125	34	Bracket; Lights; for Light Kit
R5126	34	Bracket; Switch; for Light Kit
R5165	34	Scraper; Wire; for Smoothing Roller
R5020	34	Ball Coupling 50mm (2")
R5020A	34	Drawbar to Suit R5020